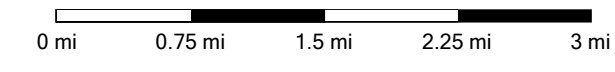


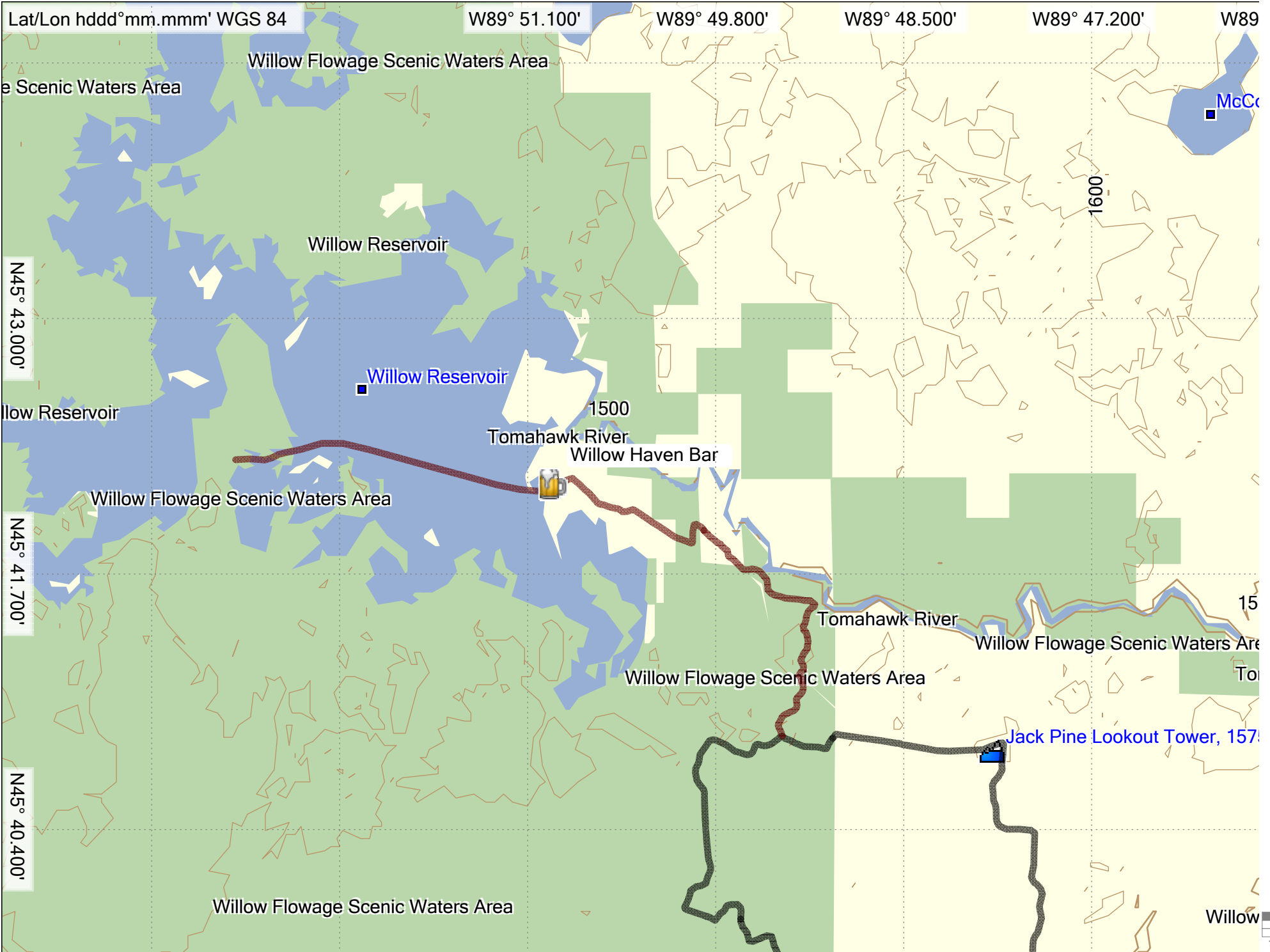
Topo U.S. 24K Northeast
© 2008 NAVTEQ. All Rights Reserved.
© Garmin Ltd. or its Subsidiaries 1995-2009

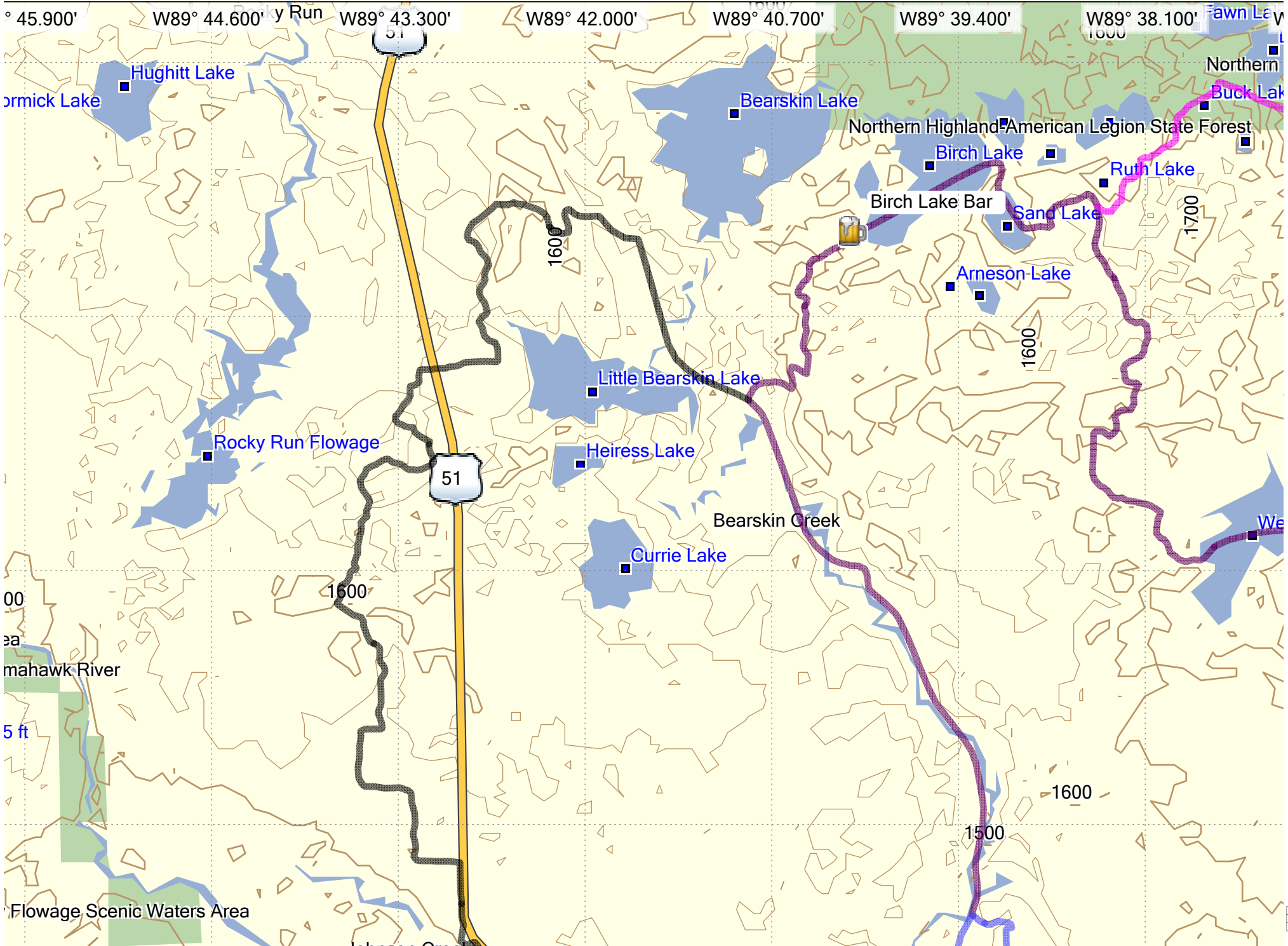
For Web Page

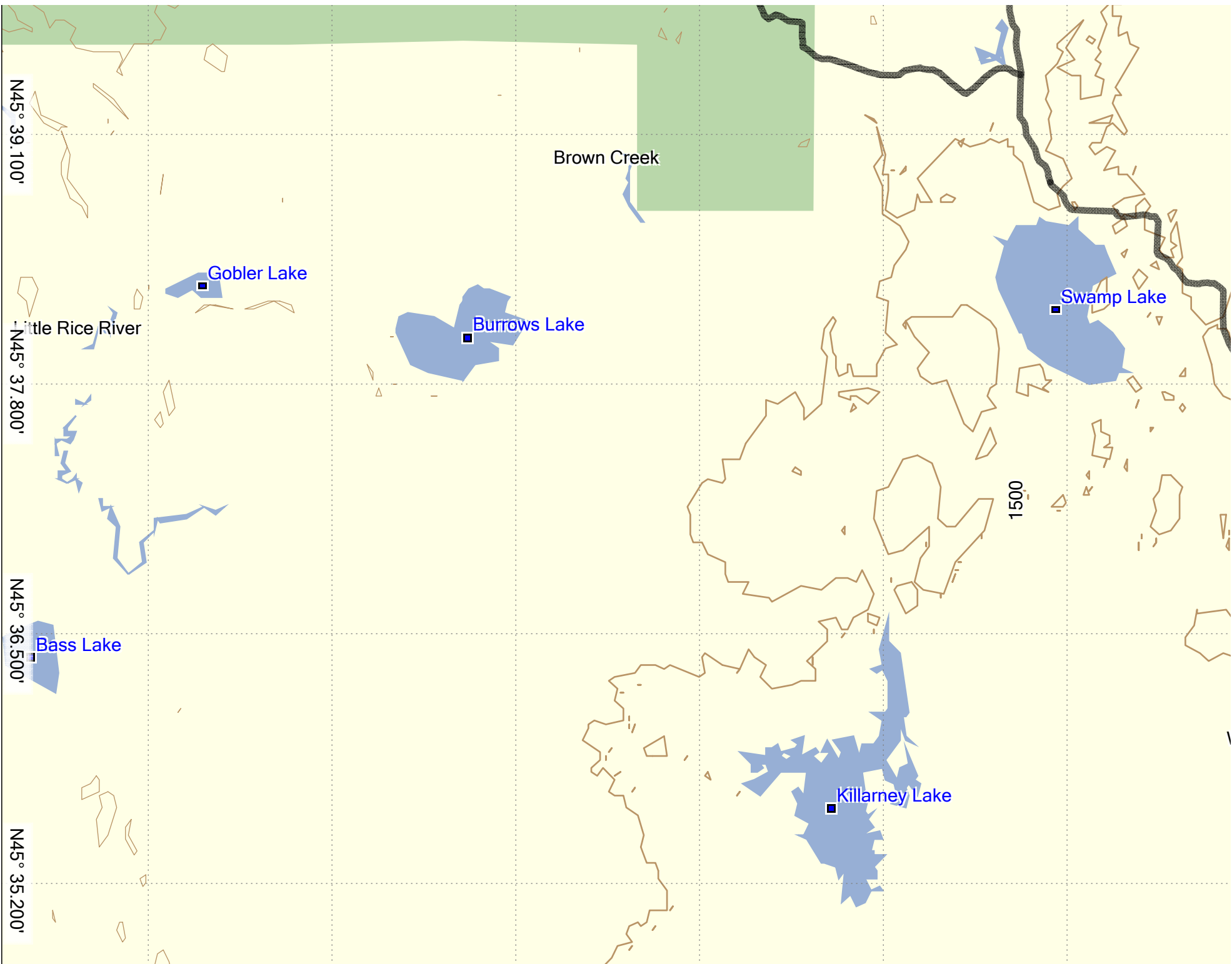
CLICK ON TRAIL FOR ZOOMED VIEW
IF ZOOM THIS PAGE, HOLD DOWN SPACEBAR TO USE HAND TOOL
OR USE SCROLLBARS TO SEE DIFFERENT PARTS



1/1/2010







N45° 39.100'

N45° 37.800'

N45° 36.500'

N45° 35.200'

Brown Creek

Gobler Lake

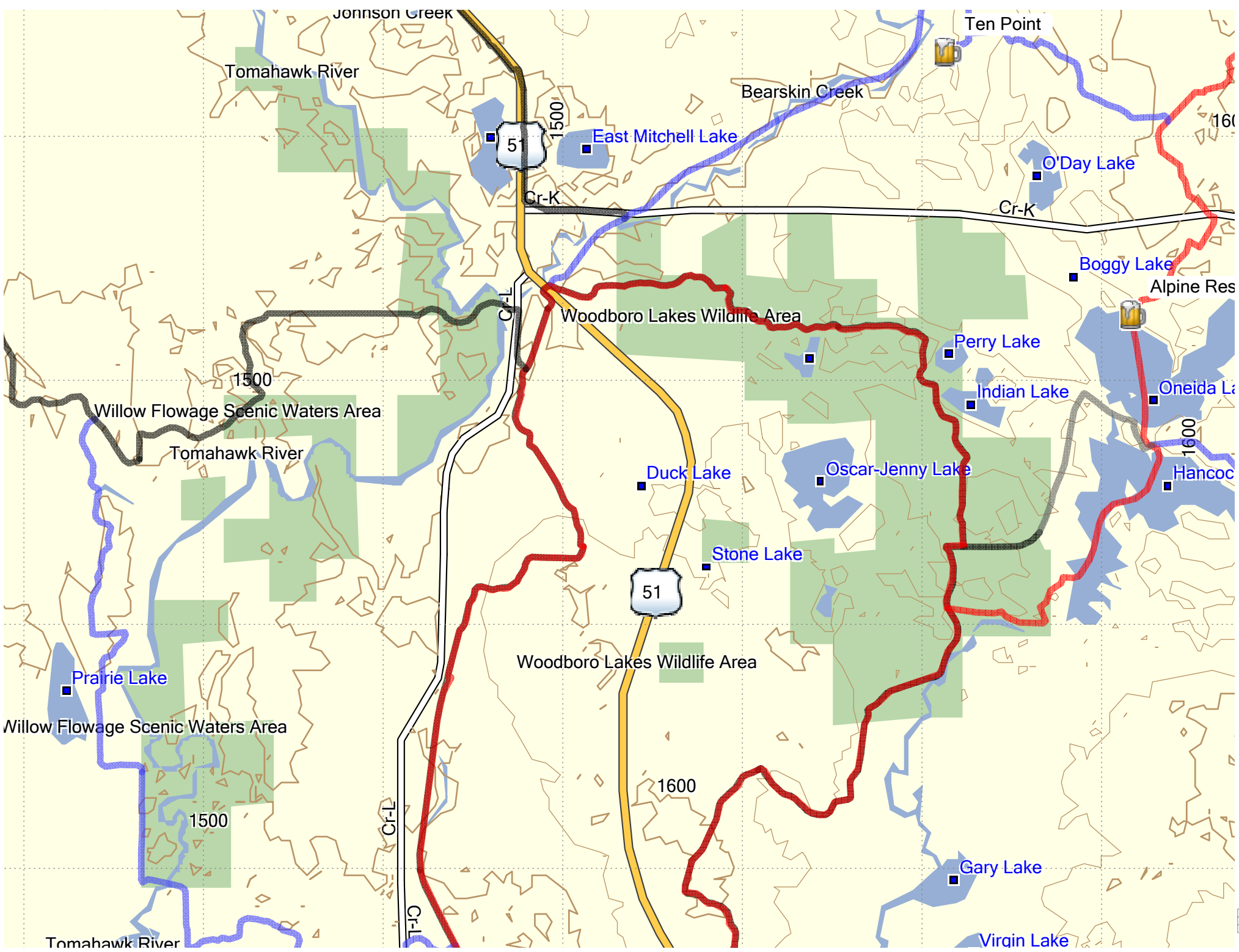
Burrows Lake

Swamp Lake

Bass Lake

Killarney Lake

1500



Johnson Creek

Tomahawk River

Ten Point

Bearskin Creek

51

1500

East Mitchell Lake

O'Day Lake

Cr-K

Cr-K

Boggy Lake

Alpine Res

Woodboro Lakes Wildlife Area

Perry Lake

1500

Willow Flowage Scenic Waters Area

Tomahawk River

Indian Lake

Oneida Lake

Hancock Lake

1600

Duck Lake

Oscar-Jenny Lake

51

Stone Lake

Woodboro Lakes Wildlife Area

Prairie Lake

Willow Flowage Scenic Waters Area

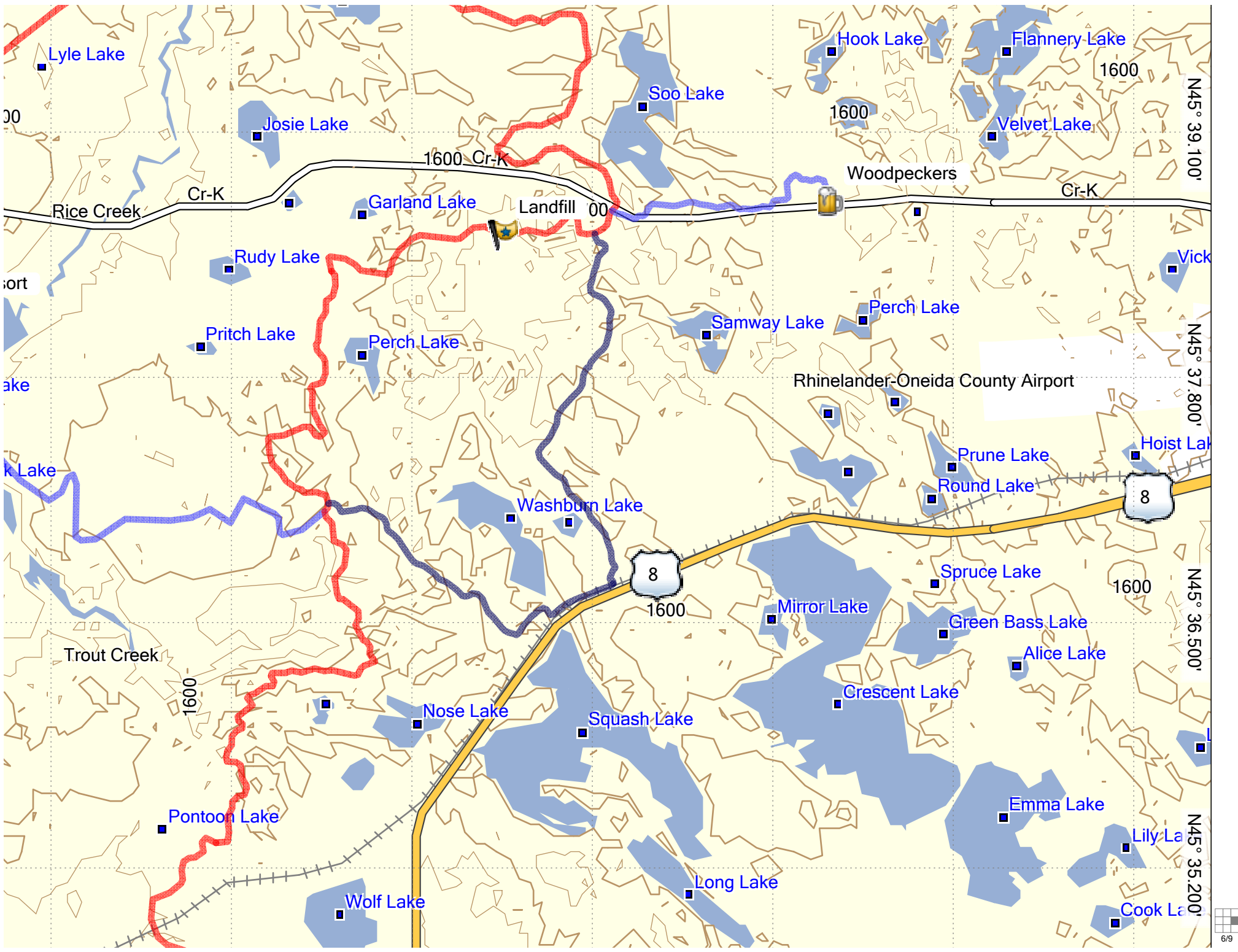
1600

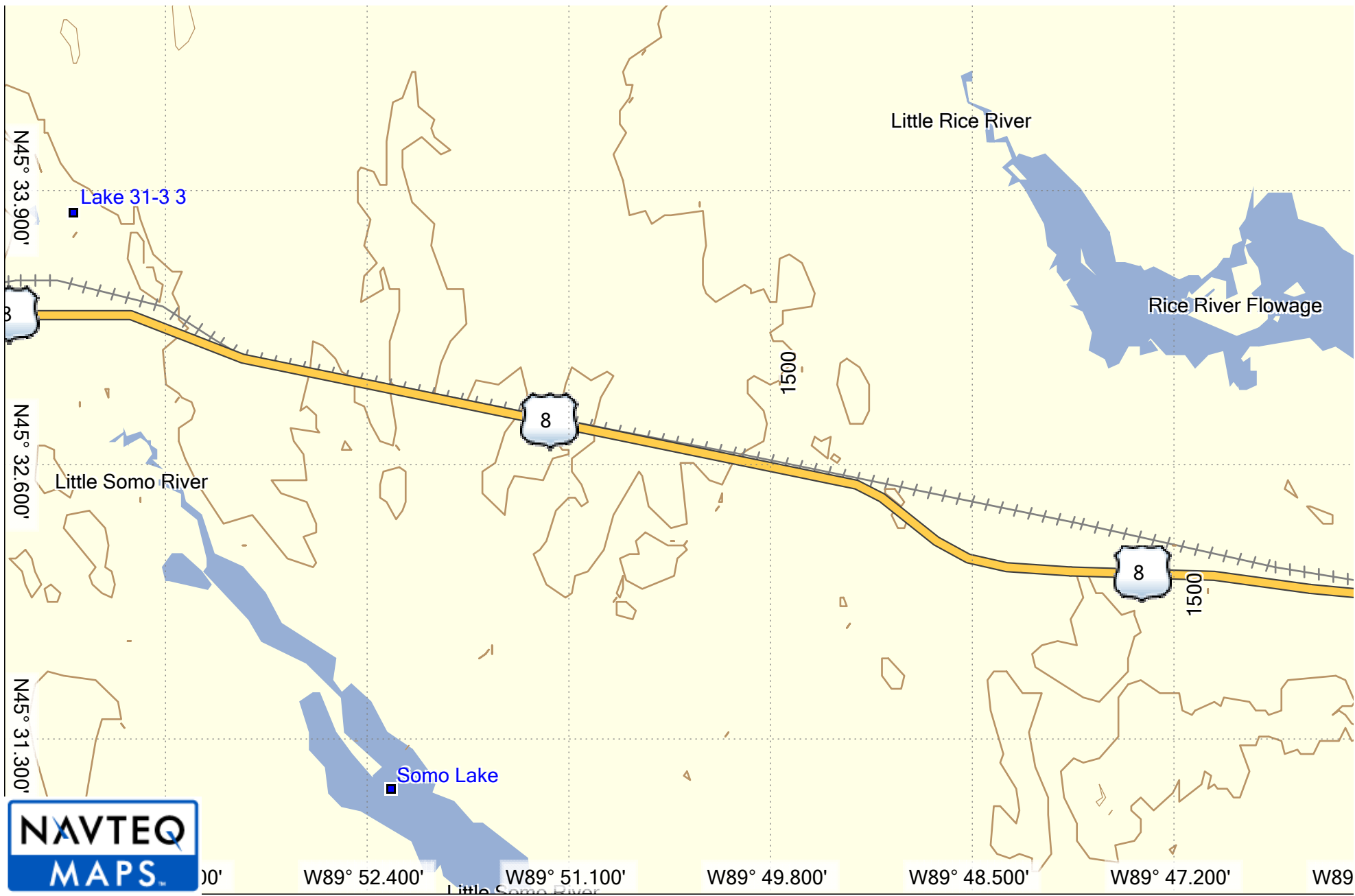
Cr-L

Gary Lake

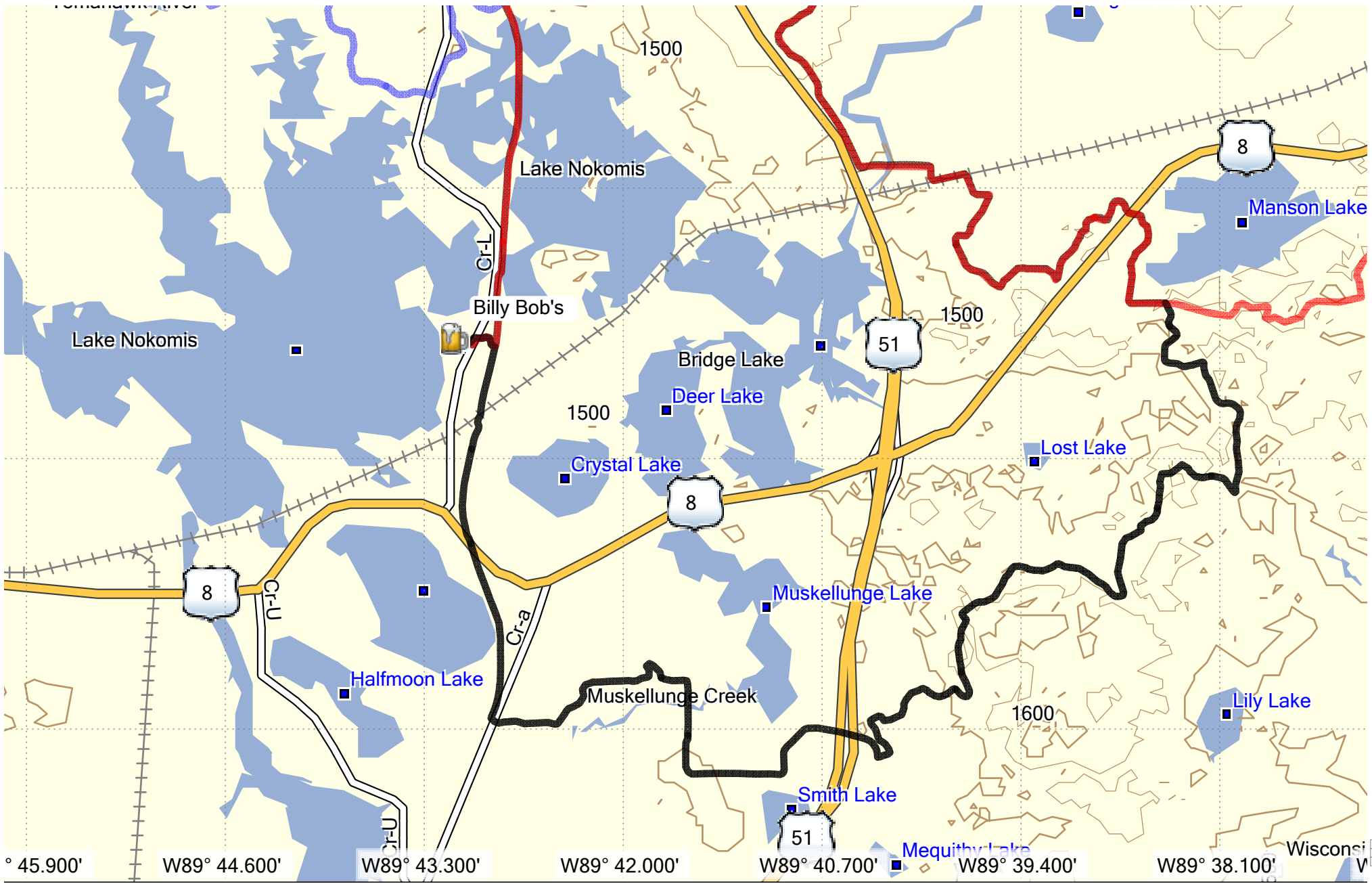
Tomahawk River

Virgin Lake





Topo U.S. 24K Northeast
© 2008 NAVTEQ. All Rights Reserved.
© Garmin Ltd. or its Subsidiaries 1995-2009



° 45.900' W89° 44.600' W89° 43.300' W89° 42.000' W89° 40.700' W89° 39.400' W89° 38.100' Wisconsin

